

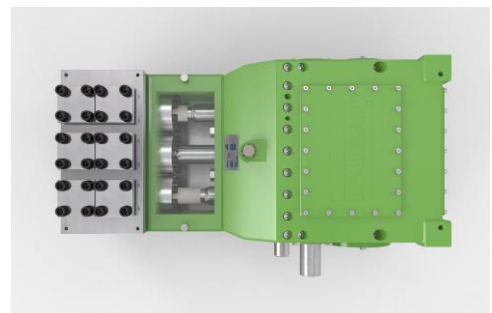
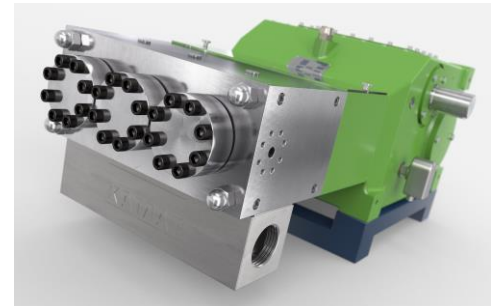
Triplex Plungerpumpe K 20000 – 3G

P 30-1

Triplex Plunger Pump

01.01.2017

- Förderstromangaben mit 100% volumetrischem Wirkungsgrad und 20°C Umgebungstemperatur
 - Mindestvordrücke je nach Fördermedium
 - Drehzahlbereich 10-100% je nach Stangenkraft
 - Getriebe dynamisch gewuchtet
 - Getriebe mit Tauchschmierung
 - Standard Getriebeuntersetzungen $i = 3,33 - 3,50 - 4,04 - 4,62 - 5,44$
 - Auch nach API 674 lieferbar
 - Sondermedien wie Seewasser, Glykol, Methanol, Öle, etc. auf Anfrage
-
- Flow rate is based on 100% volumetric efficiency and 20°C ambient temperature
 - min. inlet pressure depending on fluid medium
 - Speed range 10-100% depending on rod force
 - Gear dynamically balanced
 - Gear with splash lubrication
 - Standard gear ratios $i = 3,33 - 3,50 - 4,04 - 4,62 - 5,44$
 - Also available to API 674
 - Special medium such as sea water, glycol, methanol, oils, etc. on request



$n_{nom} = 375 \text{ 1/min}$		p max. bar @ kW				Kopftyp / Head type		
Typ / Type	l/min	110 kW	132 kW	160 kW	200 kW	A	M	MC
K 20018 – 3G	34	1700	2040	2470	2800	1		
K 20020 – 3G	42	1375	1650	2000	2500	1		
K 20022 – 3G	51	1120	1350	1630	2000	1		
K 20024 – 3G	61	940	1125	1360	1700	1		
K 20026 – 3G	72	820	965	1160	1410	1		
K 20028 – 3G	83	720	855	1015	1215	1		
K 20030 – 3G	95	630	755	900	1060	1		H
K 20032 – 3G	109	555	660	800	930	1		H
K 20036 – 3G	137	435	525	635	735	1		H
K 20040 – 3G	170	355	420	510	595	1		H
K 20045 – 3G	215	270	325	390	470	1	1	H
K 20050 – 3G	265	210	255	310	380	1	1	H
K 20055 – 3G	321	175	210	255	315		1	1
K 20060 – 3G	382	150	180	215	265		1	1
K 20065 – 3G	448	125	150	185	225		1	1
K 20070 – 3G	519	110	130	160	195			1
K 20075 – 3G	596	95	115	140	170			1
K 20080 – 3G	678	85	100	120	150			1
K 20085 – 3G	766	75	90	105	130			1
K 20090 – 3G	858	65	80	100	120			1
K 20095 – 3G	957	60	75	90	105			1

API 674 = max. 320 1/min

= Ultra High Pressure UHP

KAMAT GmbH & Co. KG

Salinger Feld 10, 58454 Witten, Deutschland, Fon +49 (0)23 02 / 89 03-0, Fax +49 (0)23 02 / 80 19 17, info@KAMAT.de, www.KAMAT.de

Technische Änderungen vorbehalten. / The right to technical changes is reserved.

Maßzeichnung K 20000 – 3G

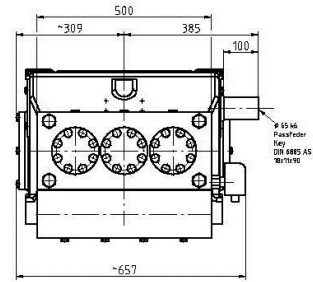
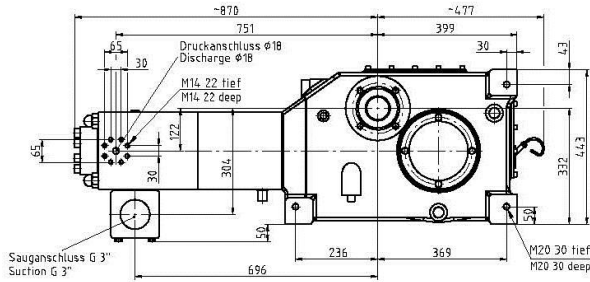
Dimension drawing

~ 940 kg

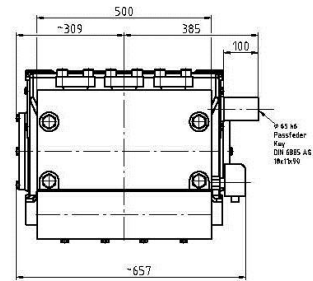
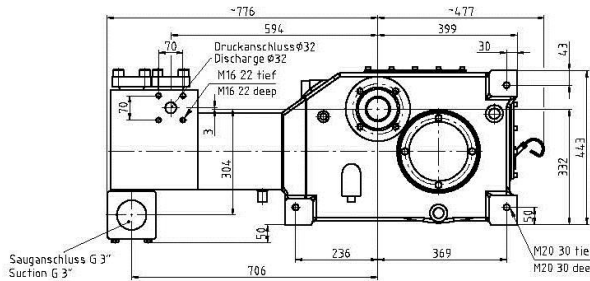
P 30-2

01.05.2017

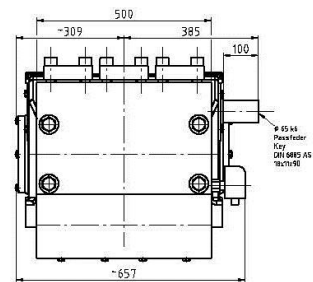
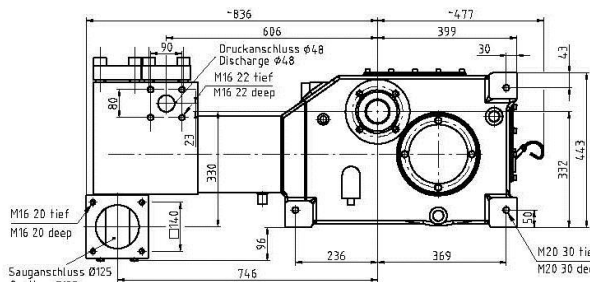
Typ A
Type A



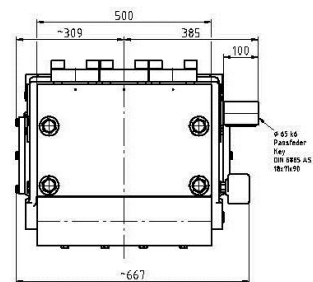
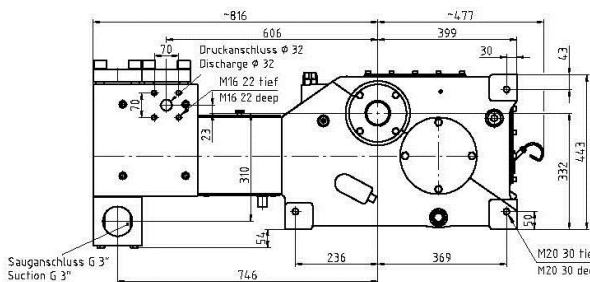
Typ M
Type M



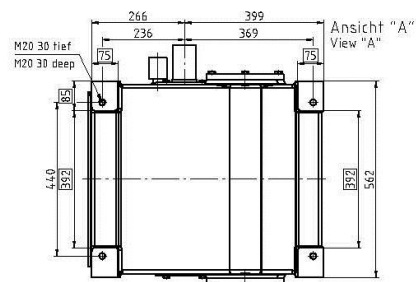
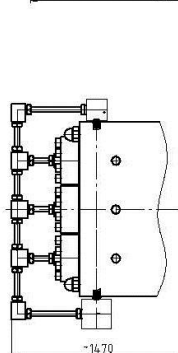
Typ MC
Type MC



Typ MCH
Type MCH



Typ A
Type A
≥ 1500 bar



Höchstdruckkopf ≥ 1500 bar
High Pressure Head ≥ 1500 bar