

Mobile Two Consumer Control 3500 bar - pneumatic

Z 80-4e

22.06.2016



Application:

The integrated valves are used as multi-operation control valves for gun operation as well as control valves for hydroforming, hydraulic installations, etc.

The electric power and pneumatic pressure is supplied via KAMAT units (f.e. KAMJET) or external by the customer.

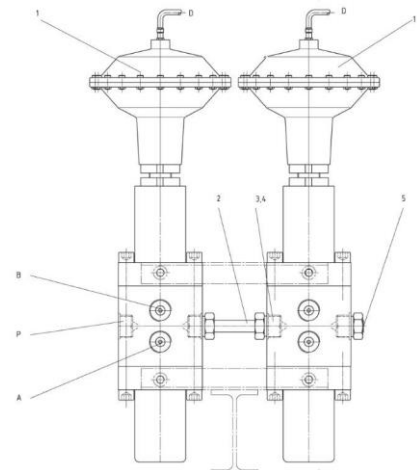
Material:

All parts coming into contact with fluid are stainless.

On request also available in sea water- resistant materials.

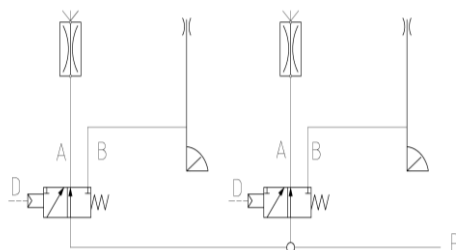
Technical data:

Part no.	7027064
Medium	max. 1000 mPas
Flow rate	max. 50 l/min (each valve)
Pressure range	max. 3500 bar
Required air pressure	6 – 8 bar
HP-connection	M 14x1.5 LH / M 26x1.5
Flow divider outlet	G 1" female



Scope of supply:

- 2x 2/2 way pneumatic control valve
- 1x Electro pneumatic control panel box
- 2x Cable reel 50 for remote control
- 1x Cable reel 20 m for air supply
- 1x Cable reel 20 m for electric power supply
- 2x Flow divider with nozzles and bypass connector
- 2x Tool supporter (f.e. max. 2 guns)
- 1x Mobile base frame with rigid and swivel wheels



D = Air connection
A = Outlet flow divider

P = HP inlet
B = Outlet gun



HP- Guns, hoses and nozzles are not including into this system and must be ordered separately depending of the application.